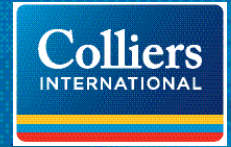


FOR SUBLEASE > OFFICE/INDUSTRIAL SPACE



# Woodland Business Park

3600-G WOODPARK DRIVE, CHARLOTTE, NC



## Woodland Business Park > Sublease

Woodland Business Park consists of  $\pm$ 1,200,000 square feet located within the North Submarket.

Located in Charlotte's north submarket, Woodland Business Park is 1 mile to I-85, 2 miles to the I-77 & I-85 Interchange and less than 5 miles from Charlotte's central business district.

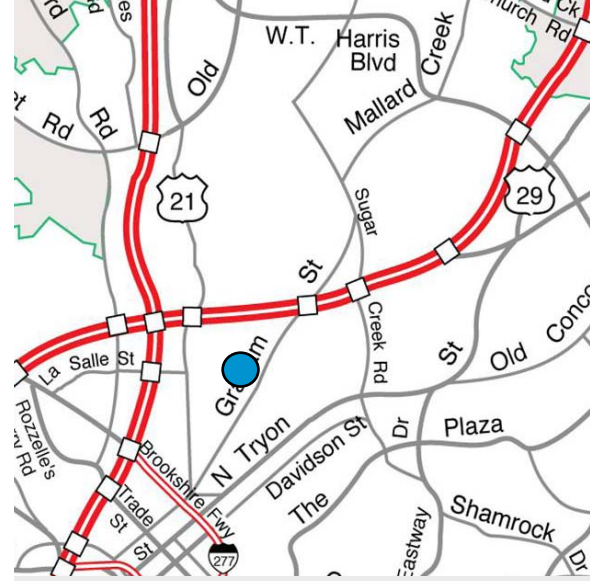
## Building Amenities

- > 9,720 SF total available
- > 4,350 SF of office
- > 2 dock doors
- > 1 van height door
- > 1 drive-in ramp
- > 16' clear height
- > Fenced truck court
- > 100% wet sprinklered
- > End cap space
- > 35' x 40' column spacing
- > Zoned I-2
- > \$5.50/SF NNN
- > Term expires April 2015

GRANT MILLER  
704 409 2364  
CHARLOTTE, NC  
grant.miller@colliers.com

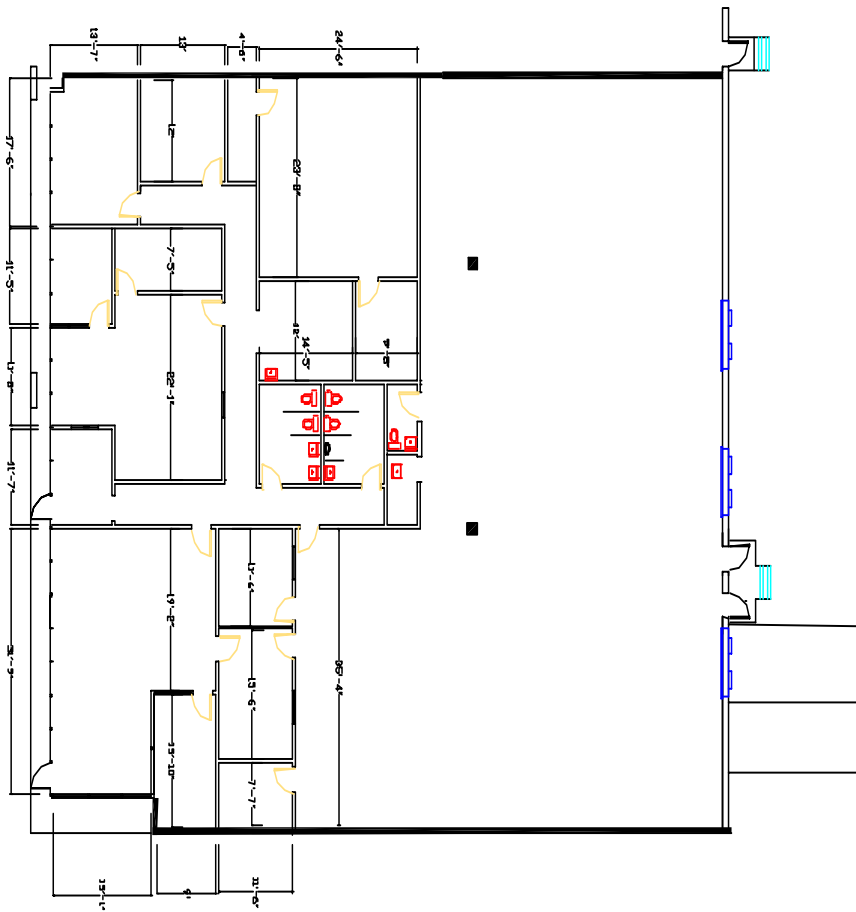
COLLIERS INTERNATIONAL  
212 S. Tryon Street, Suite 375  
Charlotte, NC 28281  
www.colliers.com

# Woodland Business Park > Floor Plan



## Contact Us

GRANT MILLER  
704 409 2364  
CHARLOTTE, NC  
[grant.miller@colliers.com](mailto:grant.miller@colliers.com)



COLLIERS INTERNATIONAL  
212 S. Tryon Street, Suite 375  
Charlotte, NC 28281  
[www.colliers.com](http://www.colliers.com)

The information contained herein has either been given to us by the owner of the property or has been obtained from sources that we deem reliable. We have no reason to doubt its accuracy, but we do not guarantee it. This property is subject to prior sale, lease, price change or withdrawal without notice. Note: Broker participation is welcomed. Compensation is offered to buyer/tenant representative.

