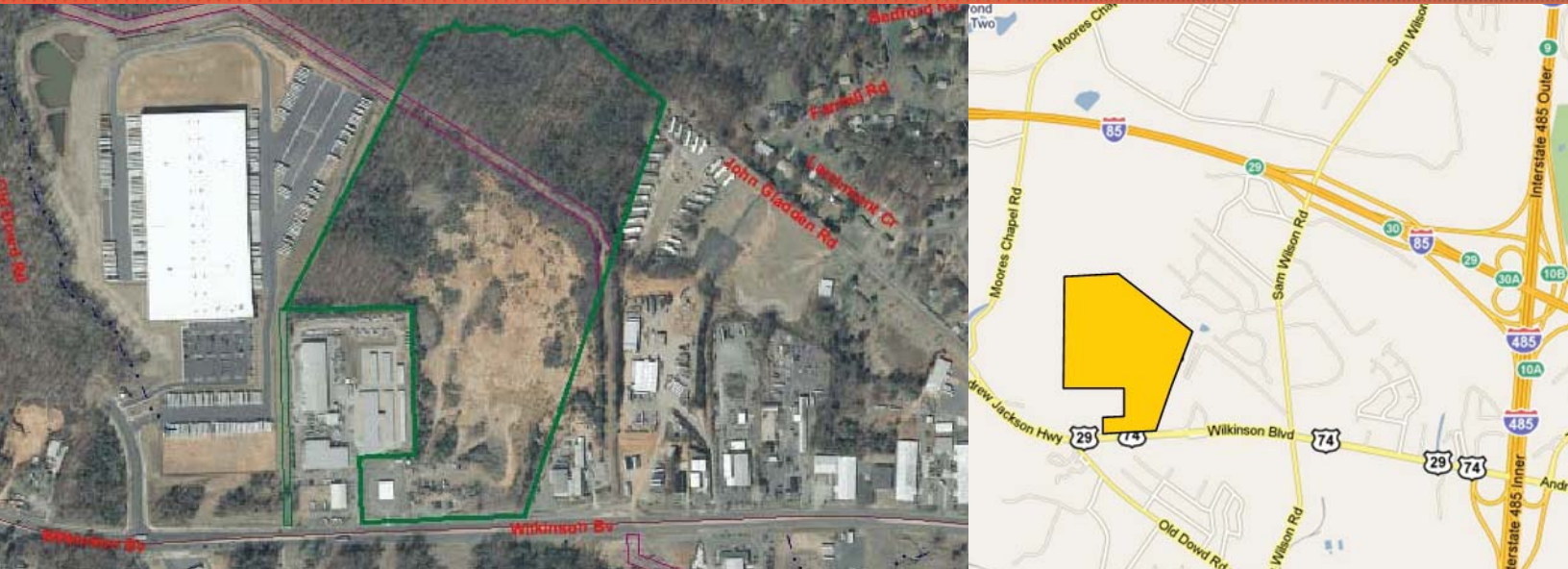


FOR SALE > RAW LAND



46.3 acres Wilkinson Blvd.

9040 WILKINSON BOULEVARD, CHARLOTTE, NC



9040 Wilkinson Blvd > Land

This parcel provides excellent access to I-85, I-485 and the Charlotte-Douglas International Airport. Municipal water and sewer currently serve the site.

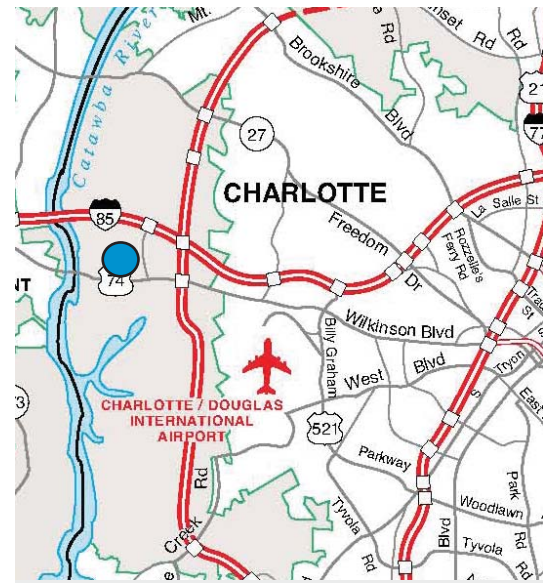
With over 700' of frontage on Wilkinson Boulevard (Highway 74) this rare 46.3 acre parcel is located 1 mile to the I-85 and I-485 interchange and <5 miles to Charlotte-Douglas International Airport.

Property Specifications

- > Zoned I-1, I-2 & R-3
- > 1-2 = ±16.5 acres
- > 1-1 = ±6.8 acres
- > R-3 = ±23 acres
- > ±700' of frontage on Wilkinson
- > 24" gravity sewer line
- > 12" water line
- > 1 mile to I-85 & I-485
- > Flat to rolling topography
- > \$70,000 per acre

Wilkinson Boulevard > Land

POTENTIAL SITE PLAN



Contact Us

LAWRENCE SHAW SIOR

704 409 2362

CHARLOTTE, NC

lawrence.shaw@colliers.com

COLLIERS INTERNATIONAL

212 S. Tryon Street, Suite 375

Charlotte, NC 28281

www.colliers.com

The information contained herein has either been given to us by the owner of the property or has been obtained from sources that we deem reliable. We have no reason to doubt its accuracy, but we do not guarantee it. This property is subject to prior sale, lease, price change or withdrawal without notice. Note: Broker participation is welcomed. Compensation is offered to buyer/tenant representative.

