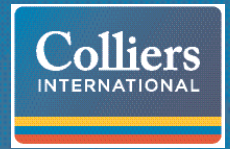


FOR LEASE > INDUSTRIAL SPACE

Perimeter West

PERIMETER WEST DRIVE, CHARLOTTE, NC



Perimeter West > Industrial Space

Owned and managed by Lord Baltimore Properties this Class "A" Distribution Park has direct access to I-485, within 1 mile from I-85, +/-4 miles from Charlotte Douglas International Airport. The first building in the park is fully leased (pictured above), the proposed building can be ready for occupancy within 6-8 months.

Site is graded with building pad in place to facilitate a quick delivery. Near future Norfolk Southern Intermodal Yard. Land sites also for sale.

Building Amenities

- > 20,000 - 160,000 SF available
- > Office space to suit
- > 30' clear height
- > 40'x 50' typical bay size
- > Dock high & drive-in loading
- > ESFR sprinkler system
- > 200' building depth
- > Zoned I-1 CD
- > Immediate access to I-485
- > One mile from I-85

OWNED & MANAGED BY:

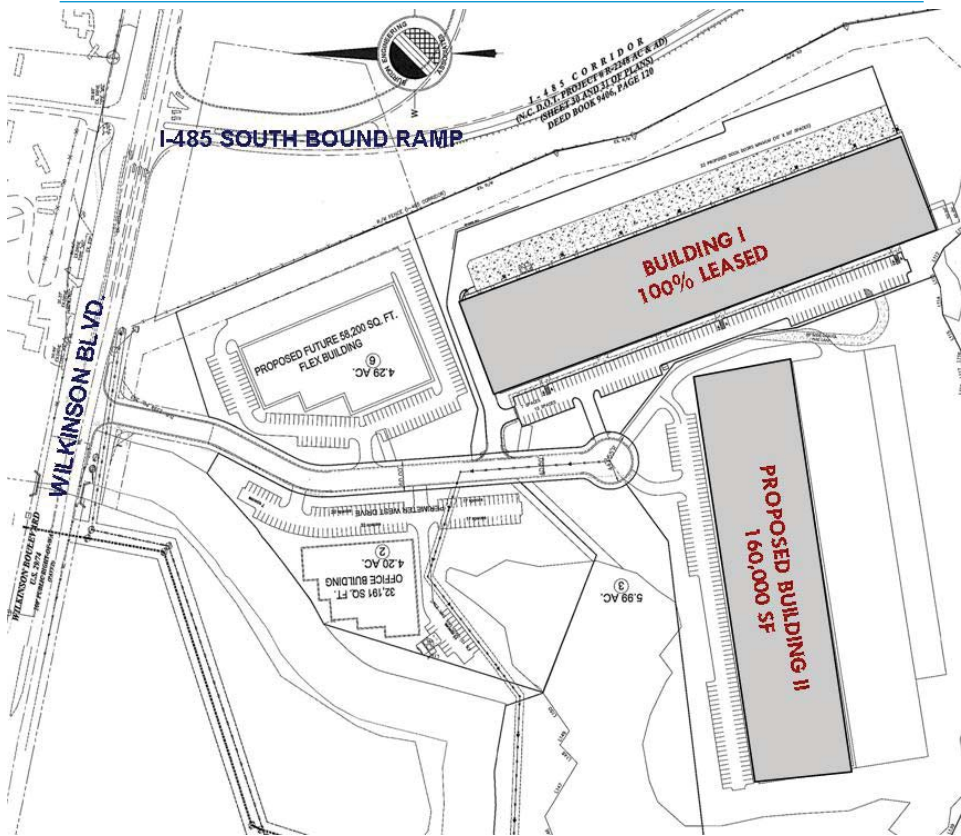


GREG COPPS SIOR
704 409 2361
CHARLOTTE, NC
greg.copps@colliers.com

GRANT MILLER
704 409 2364
CHARLOTTE, NC
grant.miller@colliers.com

COLLIERS INTERNATIONAL
212 S. Tryon Street, Suite 375
Charlotte, NC 28281
www.colliers.com

Perimeter West > Site Plan



Contact Us

GREG COPPS SIOR

704 409 2361

CHARLOTTE, NC

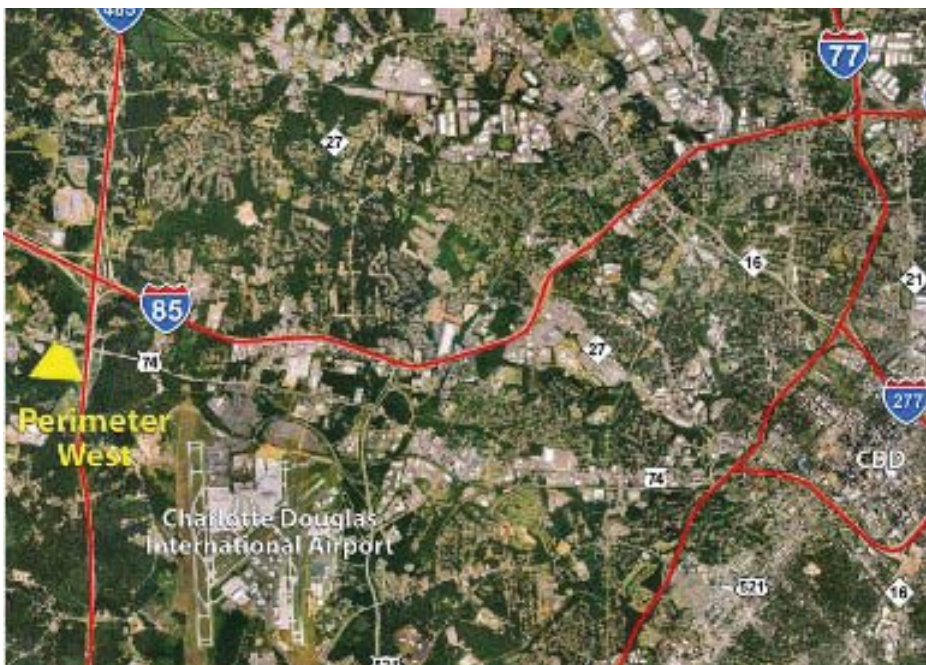
greg.copps@colliers.com

GRANT MILLER

704 409 2364

CHARLOTTE, NC

grant.miller@colliers.com



COLLIERS INTERNATIONAL

212 S. Tryon Street, Suite 375
Charlotte, NC 28281

www.colliers.com

The information contained herein has either been given to us by the owner of the property or has been obtained from sources that we deem reliable. We have no reason to doubt its accuracy, but we do not guarantee it. This property is subject to prior sale, lease, price change or withdrawal without notice. Note: Broker participation is welcomed. Compensation is offered to buyer/tenant.

