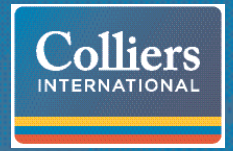


FOR LEASE > FLEX SPACE

Bailes Ridge Corporate Park



9484 OLD BAILES ROAD, FORT MILL, SC



Bailes Ridge Corporate Park >

Built in 2009, this class "A" corporate park offers a unique location minutes to Ballantyne.

Located in just south of Charlotte's Ballantyne area, this Class "A" flex property offers many amenities including shopping, restaurants and hotels. The park is 5 miles from I-485 and 6 miles from I-77.

Building Amenities

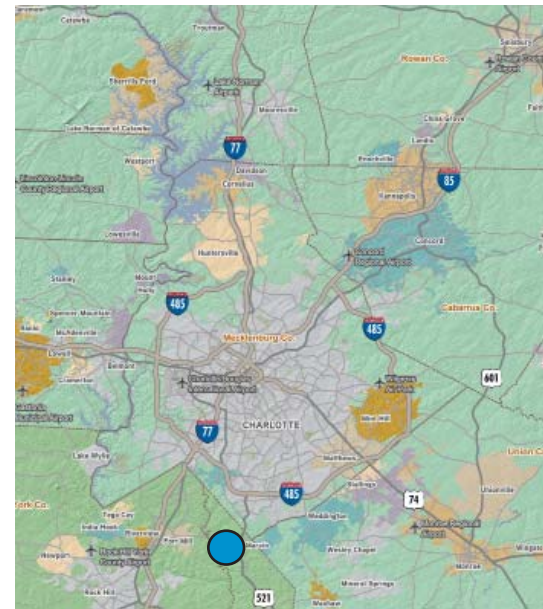
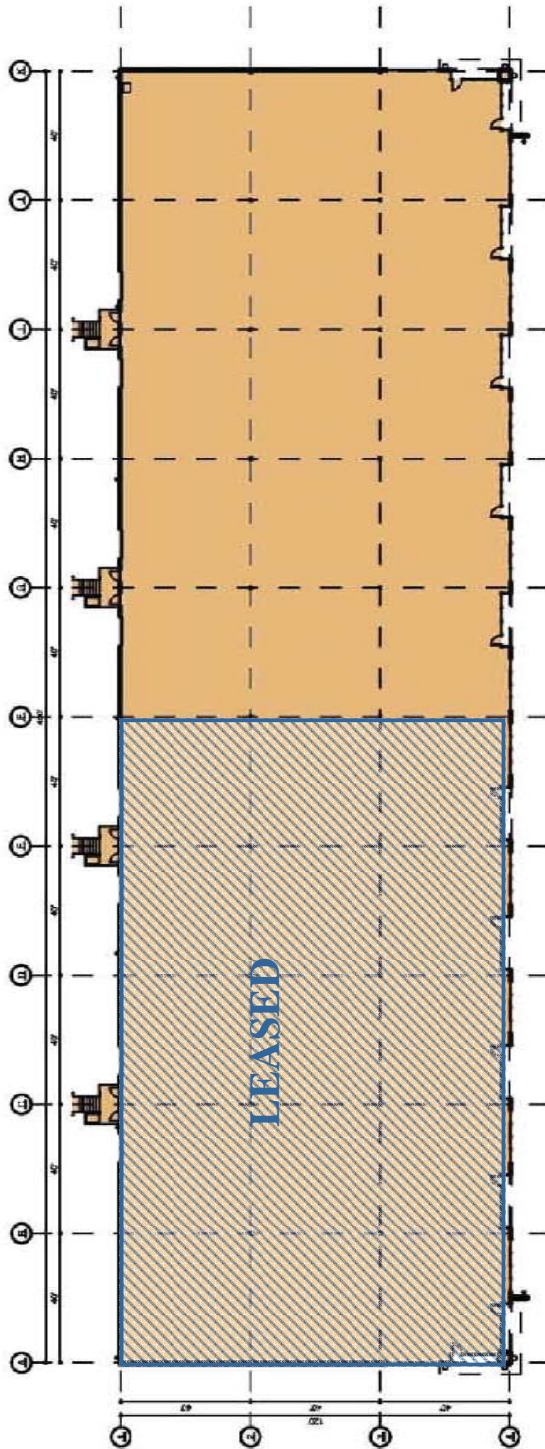
- > 9,600 - 24,000 SF available
- > 18' clear height
- > 4 dock doors a 3 knock-out panels
- > Wet sprinkler system
- > 120' building depth
- > 43 auto parking spaces
- > Office space to suit
- > 5 miles to I-485
- > 6 miles to I-77
- > Minutes from Ballantyne Area

LAWRENCE SHAW SIOR
704 409 2360
CHARLOTTE, NC
lawrence.shaw@colliers.com

GRANT MILLER
704 409 2364
CHARLOTTE, NC
grant.miller@colliers.com

COLLIERS INTERNATIONAL
212 S. Tryon Street, Suite 375
Charlotte, NC 28281
www.colliers.com

Bailes Ridge Corporate Park >



Contact Us

LAWRENCE SHAW SIOR
704 409 2360
CHARLOTTE, NC
lawrence.shaw@colliers.com

GRANT MILLER
704 409 2364
CHARLOTTE, NC
grant.miller@colliers.com

COLLIERS INTERNATIONAL
212 S. Tryon Street, Suite 375
Charlotte, NC 28281
www.colliers.com

The information contained herein has either been given to us by the owner of the property or has been obtained from sources that we deem reliable. We have no reason to doubt its accuracy, but we do not guarantee it. This property is subject to prior sale, lease, price change or withdrawal without notice. Note: Broker participation is welcomed. Compensation is offered to buyer/tenant representative.

