

# FOR SUBLEASE

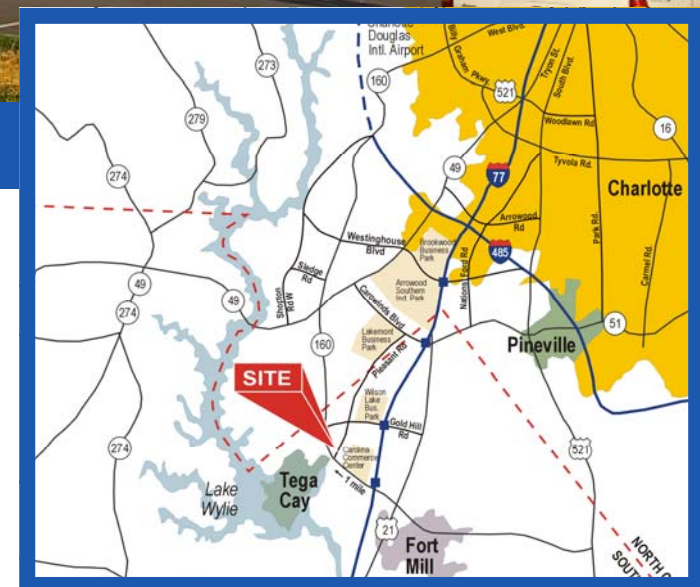
**CATAWBA DISTRIBUTION CENTER**  
1966 WEST HIGHWAY 160, SUITE 101  
FORT MILL, SOUTH CAROLINA



## ±60,000-100,000 SF AVAILABLE

- 60,000 SF available for sublease until 12/2012
- 4,690 SF of office space
- 7 existing dock doors with seals, 2 with pit levelers, one edge of dock leveler.
- 6 trailer spaces or can be used for auto parking
- 30' Clear Height
- 50' x 50' Typical Bay Size
- ESFR Sprinkler System
- 200' Building Depth
- 19 auto parking spaces in front of office, additional parking in front of the building and in adjacent lot

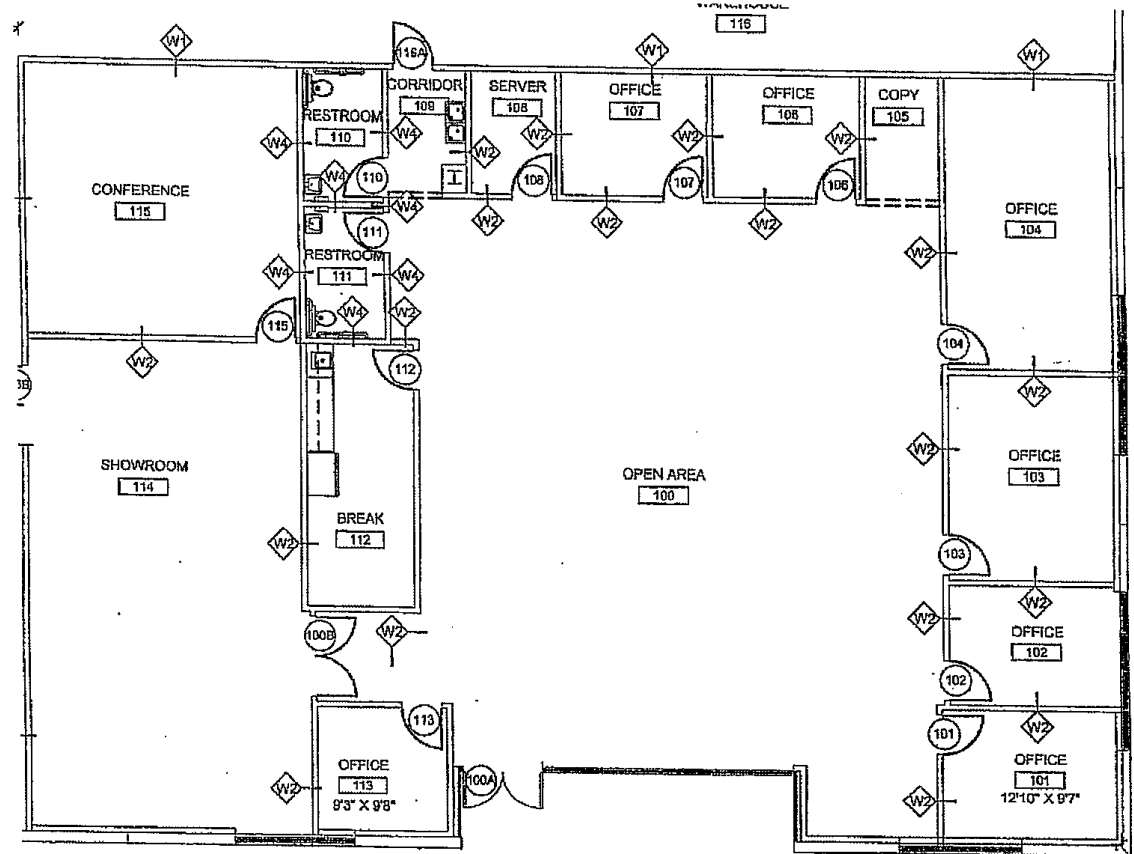
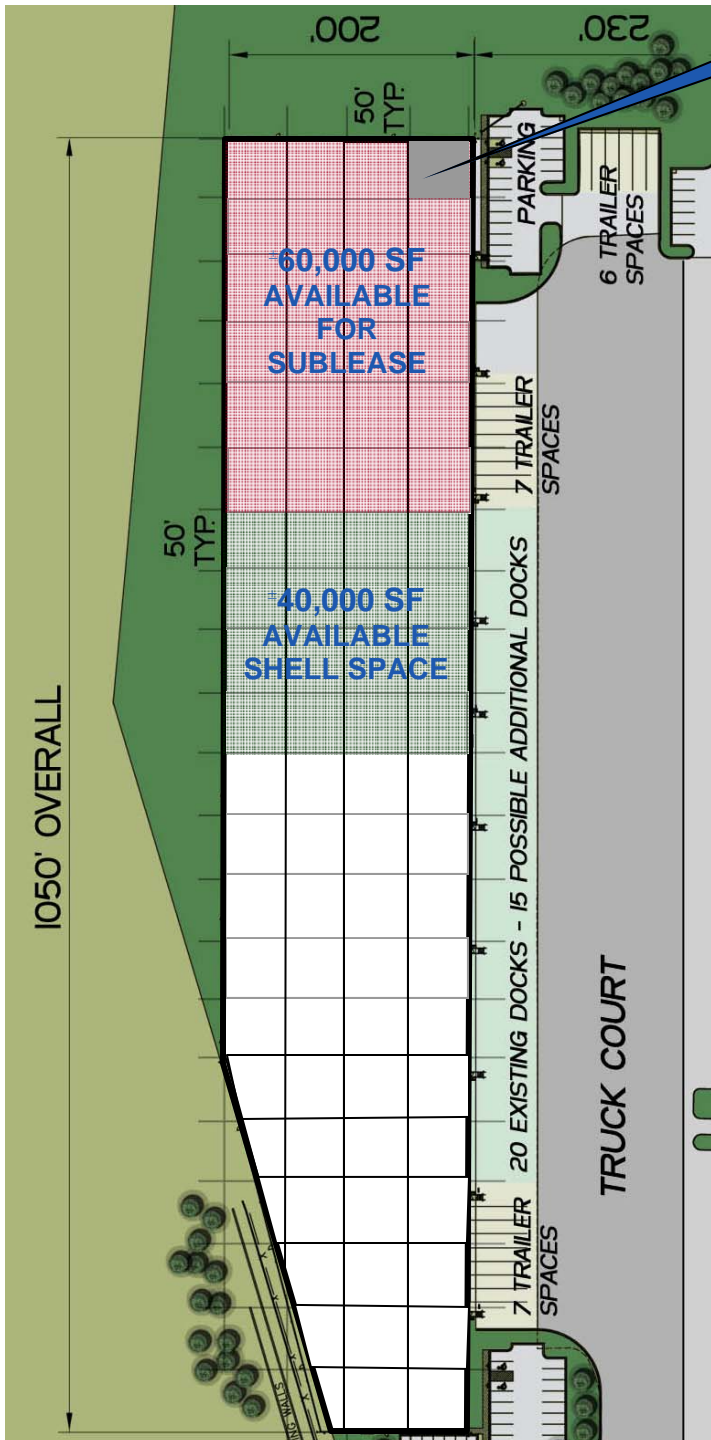
**CLARUS**  
PROPERTIES, INC



# CATAWBA DISTRIBUTION CENTER

York County, South Carolina

OFFICE SPACE  
(SEE FLOOR PLAN)



## FOR LEASING INFORMATION CONTACT:

LAWRENCE SHAW, SIOR  
[lshaw@clarusproperties.com](mailto:lshaw@clarusproperties.com)  
**704.409.2360**

GRANT MILLER  
[gmiller@clarusproperties.com](mailto:gmiller@clarusproperties.com)  
**704.409.2364**

The information contained herein has either been given to us by the owner of the property or has been obtained from sources that we deem reliable. We have no reason to doubt its accuracy, but we do not guarantee it. This property is subject to prior sale, lease, price change or withdrawal without notice. Note: Broker participation is welcomed. Compensation is offered to buyer/tenant.

**CLARUS**  
 PROPERTIES, INC